

# Pokemon Go in Metro Phoenix: Here Are the 13 Best Places to Play

BY BENJAMIN LEATHERMAN

MONDAY, JULY 18, 2016 AT 6 A.M.



Freestone Park in Gilbert.

[\*Jay Thompson/Flickr\*](#)

## **Freestone Park**

Looking for either an Arcanine or Ponyta? What about the floating gasbag known as a Koffing? All of these Pokémons (along with Doduo, Eevee, and a few others) can reportedly be found around this small park in Gilbert. Plus, there's also Magikarp splashing around in its pond.

**Hours:** Daily, 5:30 a.m. to 10 p.m.

## **Mesa Community College & Arizona State University**

Local colleges, universities, and other institutions of higher learning are teeming with stops and spawn points. It's certainly the case at any of the 10 different schools comprising the Maricopa

spawn points. It's certainly the case at any of the 10 different schools comprising the Maricopa County Community College District, especially over at Mesa Community College. It boasts 18 different PokeStops, which makes it a great spot for mining supplies, and one [online Pokémon Go map](#) reports that Rapidash, Vulpix, Jigglypuff, and a Blastoise have all been sighted on campus.

Meanwhile, all three of Arizona State University's locations in the Valley are swarming with both stops and Pokémon, particularly the main campus in Tempe. According to the aforementioned [online map](#), you might just spy such creatures as Growlithe, Muk, Jynx, Chansey, and Arcanine and even Pikachu hanging out amidst the dozens of stops scattered about the place. And while ASU doesn't offer any degrees in Pokémon training at present, you can definitely learn the ins and outs of the game there.

**Hours:** Daily hours vary at each school.

### Roadrunner Park

"Parks are particularly a very good place to go if you're looking for Pokémon," Macen says. And one of the better parks for Pokémon hunting can be found on Cactus Road just east of the Piestewa Freeway, which has 15 stops and two gyms. Pay a visit and you might wind up adding such characters as Cubone, Lickitung, Dodrio, Graveler, Golem, or Exeggcute to your Pokédex.

**Hours:** Daily, 5:30 a.m. to 11 p.m.





They've got both monkeys and Mankeys at the zoo.

*[Amy Meredith/Flickr](#)*

### Phoenix Zoo

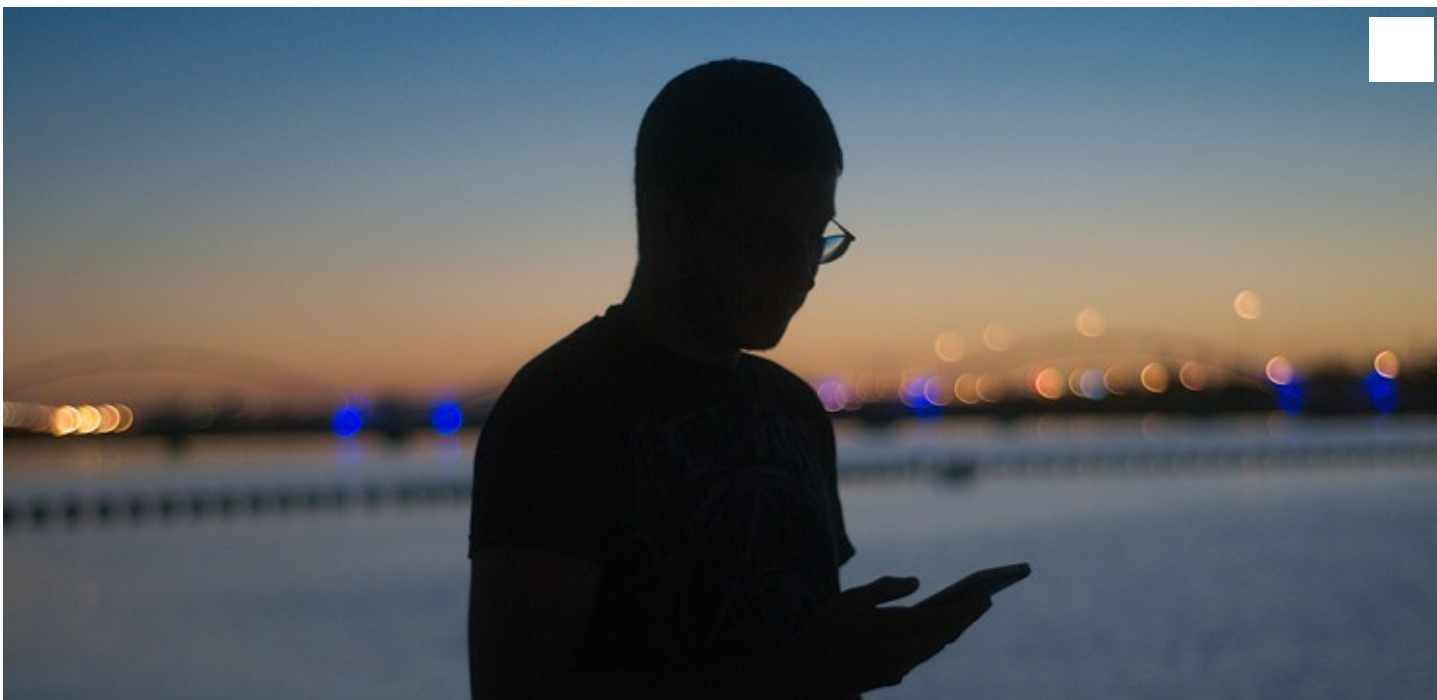
There are more than just lions, tigers, and bears populating the Phoenix Zoo these days. According to the zoo's website, a bestiary of Pokémon are lurking about – including Venomoth, Pinsir, Omanyte, Oddish, Sandslash, Ponyta, and Vulpix – thanks to the fact there are 30 different PokeStops and a couple of gyms on the premises. (The Safari Train also goes slow enough to simulate walking so you can accrue some mileage on your eggs while hitting up some stops along the way.) The zoo's staff will also be setting up lures every day through July 23 and opening up an hour earlier than normal for players eager to check the place out. That said, you'll have to buy **admission** to enter.

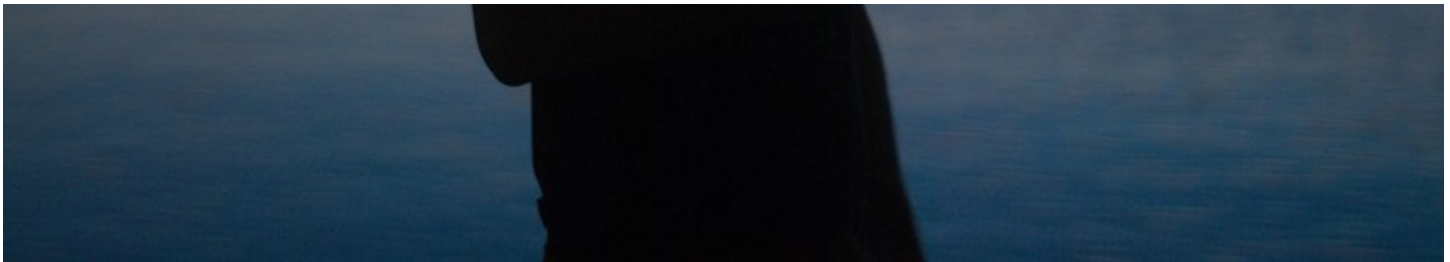
**Hours:** Daily, 6 a.m. to 2 p.m.

### Desert Breeze Park

The dragon-like Dratini, one of the rarer creatures in the Pokedex, can be found in abundance at this neighborhood park in Chandler, according to players on a few different local Pokemon Go Facebook groups. "Desert Breeze Park in Chandler is Dratini heaven," states Valley resident Jake Kutak. Better make sure you've got some supercharged Pokéballs handy, which come in handy while trying to wrangle rarer types.

**Hours:** Daily, 6 a.m. to 10 p.m.





Playing *Pokémon Go* at Tempe Beach Park.

*Benjamin Leatherman*

## **Downtown Tempe and Tempe Beach Park**

Want to add a few dozen new entries to your Pokédex? Spend a few hours searching for Pokémon along Mill Avenue, around Tempe Beach Park, and throughout the city's adjacent downtown area. All of the aforementioned locales are laden with stops, gyms, spawn points, and a couple of farms, especially both Mill Avenue and the Park. And if you've still got some energy left to hike up Tempe Butte (aka "A" Mountain), there's reportedly a Charmander farm up there.

Make no mistake, however, the park is currently the most popular place to play in the Valley. In fact, there's almost a block party like atmosphere about the place, as people tend to blast music from boomboxes (including the ultra-catchy theme to the *Pokémon* TV show) or sell shwag like Ash Ketchum hats and bottles of water. It's pretty much busy every night. As such, parking spaces are typically scarce, so consider taking the light rail.

**Hours:** The park is open from 5 p.m. to midnight, while the operating hours of Mill Avenue businesses vary.

[◀ PREVIOUS PAGE](#)

---

Sponsor Content

©2016 Phoenix New Times, LLC. All rights reserved.