

September 18, 2007

the Bulletin

MESA COMMUNITY COLLEGE'S EMPLOYEE NEWSLETTER

Schedule classes and events easily with Resource 25

Thanks to Resource 25 (R25), Mesa Community College schedulers have tossed their three-ring binders and sticky notes in the trash as they implement a more efficient tool to streamline the facility/classroom reservation process.

R25 is a campus wide space management system that allows users to schedule, maintain, and collect data on academic and non-academic facilities. This web-based system maintains all scheduled events in one easily accessible and viewable place. It directly interfaces with the new Student Information System to maintain facility synchronization for efficient use of space. R25 is scheduled to go live on October 1, 2007.

R25 allows for quick, real-time scheduling and flexibility, giving every employee access to see all campus events, both academic and non-academic. An event is defined as anything that takes up space and includes everything from classes and speech tournaments to mowing the lawns and computer installations.

Benefits of R25 and the R25 Webviewer

R25 has many convenient benefits for MCC employees. The R25 Webviewer is a "one stop" environment to view, locate and request space. College employees can view current space information, such as number of tables, desks and chairs, as well as any specific space features, such as media equipment or light fixtures. R25 will also store past requests for future reference. Additionally, R25 allows the college to maintain its current scheduling hierarchy for academic events in classroom spaces.

Beginning October 1, requesting space will involve the following steps:

1. Search Webviewer for available space
2. Requester fills out web request form

3. Web request form is processed by appropriate scheduler
4. Requester checks Webviewer for approval, denial, or changes to request

Prior to deployment, employees will receive information on how to access R25.

For more information, contact the following individuals

Non-academic space scheduling:

Angela Cissell, R25 Application Administrator, at x17457

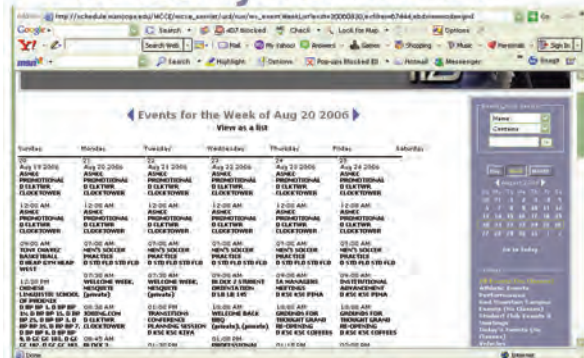
Academic space scheduling:

Jennifer Edwards, R25 Interface Administrator, at x17416.

A Daily View in R25



A Weekly View in R25





Where should you go for help once the new SIS goes live?

UPK within SIS

A powerful “Help” tool is embedded in the SIS application. Once you’re in SIS, click on “Help” in the upper right hand corner of the screen and choose the link labeled UPK (User Productivity Kit). Note: **You must enable pop-ups for the UPK to work.**

District-wide Help Desk – 1-888-994-4433

The District has contracted with PerceptIS for 24/7 user support.

Why should I call 1-888-994-4433 to get help?

1. A District-wide helpdesk has been established as the colleges’ first level of support.
2. They will track issues so problems within the system can be addressed.
3. Your questions will help them create FAQs which will enable them to readily respond when that same question is asked again. A knowledge base is created each time they respond to a question.
4. By calling 1-888-994-4433 and following procedures, the response time to your question will be enhanced.

5. The response team at this number has anticipated what some of the frequently asked questions may be and has prepared responses.

What help can I expect?

1. The helpdesk is ready to respond to questions such as how to obtain your Maricopa Enterprise ID or where to go to reset your password.
2. They will help you with any SIS usage related problems.
3. If you have technical problems, the helpdesk will refer you to MCC’s Technology Support Services for assistance.

What do I do if someone asks me a SIS question?

1. If you don’t know the correct answer, refer the person to 1-888-994-4433.

When is help available?

1. Help is available 24/7 once the Student Information System is live.
2. If the Help Desk can’t answer your question, the question will be referred to a college expert for a response.

Who can access this help?

* Faculty, staff, students and potential students.

MCC Partners with Mesa's Symphony of the Southwest

East Valley orchestra students will experience the thrill of performing at the Mesa Arts Center this season while earning college credit at the same time, thanks to a collaboration between Mesa's Symphony of the Southwest and Mesa Community College. The Youth Symphony of the Southwest, geared for students age 15-20, begins its second season with a performance at MCC's Red Mountain campus on Oct. 10, followed by a pre-concert opener at the Mesa Arts Center in November.

“This is an outstanding partnership between the orchestra and MCC and the students,” said Skip Carney, president of the board of directors for the Symphony of the Southwest.

Approximately 37 students from the East Valley were chosen for the group through an audition process. Students have the opportunity to request college credit for their participation in the symphony.

Cal Stewart Kellogg, music director of Mesa's Symphony of the Southwest, said the youth symphony was created last year in response to community need.

“Parents and teachers in the East Valley thought 15- to 20-year-old musicians needed an alternative to going all the way into Phoenix to play with the Phoenix Youth Symphony,” Kellogg said. “These kids are at a certain level. We build on that and the results are good.”

The youth symphony includes both college students and high school students. The symphony gives college students who may not be pursuing a music major in college an opportunity to continue performing and improve their skills. Kellogg, who has years of experience as a symphonic director and international acclaim as a opera conductor, said a certain level of musicianship is demanded of the members and in turn, provides for growth.

continued on page 3

Kellogg works with MCC's music faculty member Glen Bennett to build the youth symphony and help the Red Mountain campus build its music program. Youth symphony rehearsals are held at the Red Mountain campus and two performances are scheduled at the campus.

“Even though the symphony is a separate entity, it will show what can be done,” Kellogg said. “If, over time, the results are good, it might lead to other instrumental groups. I think over time this will grow.”

For more information, please contact Symphony of the Southwest at (480) 827-2143.

CONCERT SEASON 2007-2008

Wednesday, October 10, 2007

7:00 p.m. at MCC Red Mountain Campus in the Community Room 7110 East McKellips Road, Mesa, AZ.

Saturday, November 10, 2007

Youth Symphony of the Southwest featured for a pre-concert opener for the Symphony of the Southwest "Schimmel Winners Shine, Again!" 7:00 p.m. at Mesa Arts Center-Ikeda Theater One East Main Street, Mesa

Saturday, February 9, 2008

Youth Symphony of the Southwest featured as a pre-concert opener for the Symphony of the Southwest "Symphonic Dances and Variations" 7:00 p.m. at Mesa Arts Center-Ikeda Theater One East Main Street, Mesa

Wednesday, April 2, 2008

7:00 p.m. at MCC Red Mountain Campus in the Community Room 7110 East McKellips Road, Mesa, AZ.

Saturday, May 10, 2008

Youth Symphony of the Southwest and the Symphony of the Southwest play side by side for the special "Mother's Day with Leroy Anderson" Concert 2:30 p.m. at Mesa Arts Center-Ikeda Theater One East Main Street, Mesa

Southern and Dobson Campus art - Test your knowledge

When artist Jenita Landrum walked into the library at the Southern and Dobson campus, she was thrilled to see her painting displayed on a prominent wall. Landrum donated the painting to the college in 1995 when she closed her art gallery in Phoenix and moved to Ohio to attend graduate school.

“I walked in and said 'Wow!'” said Landrum, who moved back to the Phoenix area in April. “It just brought back a wealth of memories.”

The abstract painting, titled “Quiet Storm,” is done in bright, bold colors that create a feeling of energy and movement. Landrum said the painting is a documentation of male energy and was inspired by her husband.

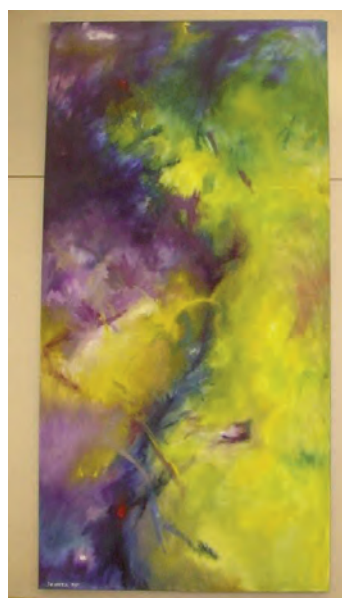
“I was trying to understand who he was—a beautiful man with a quiet storm behind him that made him powerful and seductive,” Landrum said.

In 1995, when former MCC Dean Brian Johnson originally spotted the painting in Landrum's studio, the painting was valued at \$10,000. Landrum donated the piece and the college incorporated it into its new Paul A. Elsner library in 1999. She estimates the painting is now worth about \$30,000.

Landrum completed her Masters of Fine Arts degree at Ohio State University and has exhibited her work in numerous art

exhibits. She now works as an adjunct instructor at South Mountain Community College and a program advisor at Rio Salado. She hopes to exhibit her art locally once she gets established.

“It feels great to be back,” Landrum said. “The Phoenix area is a great place to produce art.”



Quiet Storm

continued on page 4

continued from page 3

Other art on campus:



Big OU - Hiroki Tanaka, 1987, donated by Tempe Art Center, 2000. The “O” and the “U” represent stillness and calmness, the yin and yang forces.

Elevated Desert - Laurie Lundquist, 1992, part of MCC's Art in Public Places program funded by the district's



1984 bond. Provides a seating area for students and theater-goers. The tree in the middle is a metaphor for people who move to the Valley and put down roots.



Transition - Beatriz Blanco, 1984, donated by Tempe Art Center, 2000. Examines the human figure in movement.

Sacrament - Kevin Berry, 1992, part of MCC's Art in Public Places program. The sculpture functions a both a rainwater collector and filtering device and pays homage to the Salt River and the ancient people that once lived on its banks.



Presence on the Path - Beatriz Blanco, 1984, donated by Tempe Art Center, 2000. Examines the human figure in movement.

Inside/Outside - Otto Rigan, 1992, part of MCC's Art in Public Places program. Four marble chairs for functional seating.



more art on following page



Theatre Outback mural - MCC students Sam Hodges, Sara Brandt and Sarah Brodie under the supervision of Linda Speranza, 2003. The mural represents the art department, the music department, the dance department and the audience.

Sentinels to the East - Joan Waters, 2004. A watchtower that watches over the campus with a leafy top that suggests growth.



The Hands - Xiaoping Luo, 2007. Soon-to-be completed seating sculpture that symbolizes the nurturing role of education.

Double Helix Horizontal - 2004
Metal wind sculpture.



Single Hex Star - 2004
Metal wind sculpture.